

MODULAR RACK MOUNT COMPACT GENERATOR- ULTRASONIC EQUIPMENT FOR INTEGRATORS

The Ultrasonic generators have been designed to facilitate the integration of ultrasonic welding equipment in special machines or production lines. The design is based on more than 30 years of experience but also includes today's technology. With this generator, all the conditions are such that a successful integration of the ultrasonic technology in your own equipment is very easy to achieve.

FEATURES

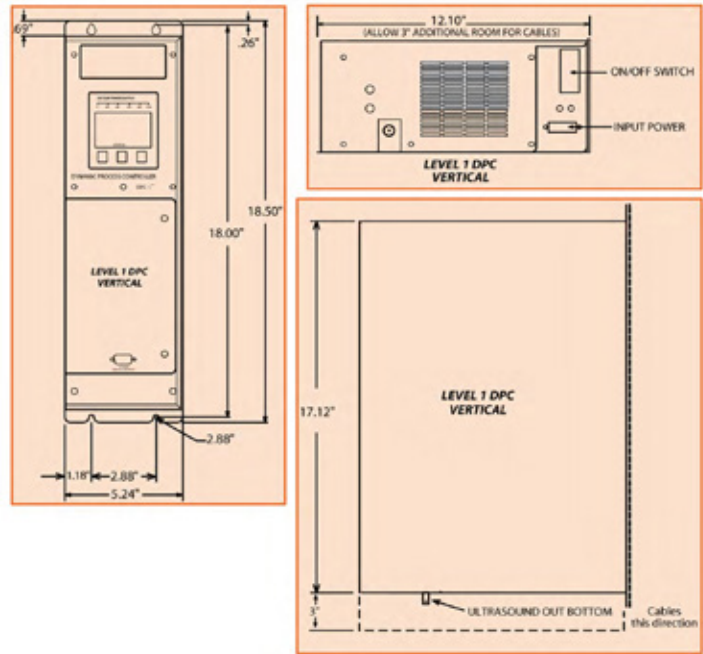
- **Modular component design** maximizes product flexibility and cost effectiveness by allowing the selection of various power levels.
- **CE Compliant** The DPC I is a CE compliant version that included in both the vertical and horizontal models. For the OEM channel, it is also available in a **non-CE** compliant version.
- **System status outputs** designed for integration into automated machines.
- **System status panel** displays any of six self-diagnostic messages, including Fault, Input Test, Overload, On Line, Over temperature, or Off Line.
- **Patented Pulse-Width Modulation** design delivers power more efficiently with substantially less stress on the electrical components for superior performance, reliability, and extended service life
- **Unique Linear Ramp Soft Start** provides a controlled activation of the amplitude during the beginning of the weld portion of a welding cycle. By controlling the ramp up time of the amplitude, stresses on the part being welded can be reduced.
- **Universal Voltage Input** automatically compensates for line voltages between 90-130, or 180-260 volts
- **Line regulation** compensates for line fluctuations assuring consistent amplitude
- **Adjustable amplitude** 100% to 40%, allows for fine tuning of the weld process
- **AUTO-TRAC tuning** using phase lock loop technology automatically locks the generator to the resonant frequency of the transducer and tooling even under varying conditions of temperature and loading
- **PAS exclusive FLOW-THROUGH COOLING** provides on demand thermostatically controlled cooling system that separates electronic components from the cooling air flow chamber.
- **Electronic overload protection** prevents component failure, reducing costly downtime
- **Advanced transformer and inductor designs** increase efficiency and reliability of electronic components
- **Load regulation** assures constant amplitude at various loads improving assembly consistency
- **Diagnostic interface capabilities** are available that utilize the optional 43A 1570 DPC Driver Board Setup Module. This feature allows the user to monitor and adjust factory default settings that expand your ability to fine tune the welding process.



DCP I VERTICAL MOUNT



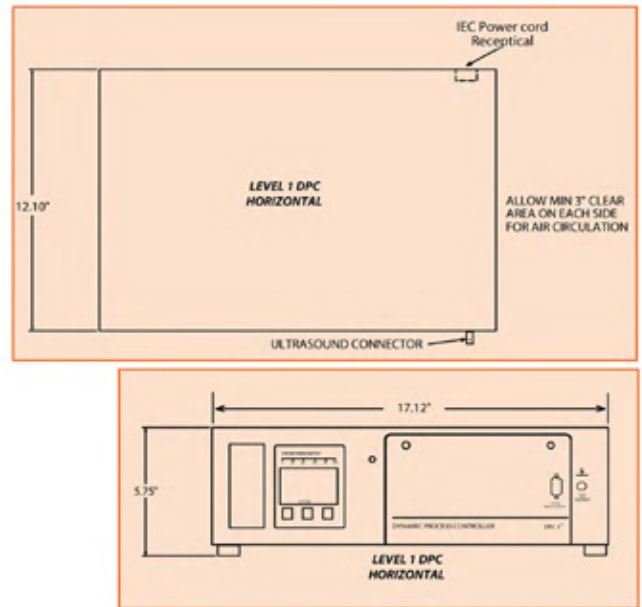
CONTROL PANEL



DCP I HORIZONTAL MOUNT



Access door of the DPC1 allows easy testing and adjusting of, Input and Output status signals, Amplitude/Frequency settings, and easy connection to the optional Test Setup box.



MODELS

Power / Frequency	100 W	150 W	350 W	500 W	700 W	800 W	1000 W	1200 W	1500 W	1700 W	2200 W	3300 W	4000 W	5000 W
15 kHz													1540	
20 kHz				2050				2120		2170	2200	2033		2050
30 kHz						3080			3150					
40 kHz			4035		4070		4100							
50 kHz		5015												
70 kHz	7010													

MACHINE MOUNTED PROBES

All of Plastic Assembly Systems' probes utilize the highest quality piezoceramics. They are tested and assembled using our exclusive patented manufacturing process to ensure durability and long term reliability.

Plastic Assembly Systems machine mountable probes are available in a variety of configurations and frequencies. Connectors can be side or rear mounted. Sealed wash-in-place units are designed for food and packaging environments. They are setup to use compressed air internal cooling making them ideal for use with hot liquids and for continuous duty slitting, stitching and sealing fabric and films.



40 kHz Solid Mount
600 watt



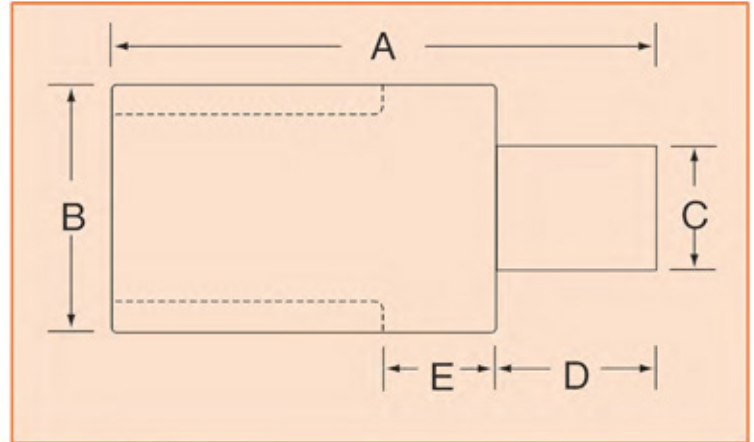
40 kHz Solid Mount



40 kHz Standard



30 kHz Standard



20 kHz Standard



20 kHz Magnum



15 kHz

FREQUENCY

Frequency	A Dim.		B Dim.		C Dim.		D Dim.		E Dim.		Watts	Lbs/Kg	
15 kHz	8.24"	209.30 mm	4.10"	104.14 mm	2.00"	50.80 mm	3.05"	77.47 mm	1.34"	34.04 mm	4000	5.90	2.68
20 kHz	5.83"	148.08 mm	2.98"	75.69 mm	1.50"	38.10 mm	1.91"	48.51 mm	1.09"	27.69 mm	3000	2.80	1.27
20 kHz Sealed	6.00"	152.40 mm	2.98"	75.69 mm	1.50"	38.10 mm	1.88"	47.75 mm	1.09"	27.69 mm	3000	3.10	1.41
20 kHz Magnum	5.83"	148.08 mm	2.98"	75.69 mm	1.50"	38.10 mm	2.19"	55.63 mm	0.81"	20.57 mm	3000	2.50	1.13
30 kHz	5.21"	132.33 mm	2.00"	50.80 mm	1.00"	25.40 mm	1.21"	30.73 mm	—	—	1500	1.20	0.54
30 kHz Solid Mount	5.71"	145.03 mm	2.00"	50.80 mm	1.00"	25.40 mm	1.21"	30.73 mm	—	—	1500	1.40	0.64
40 kHz	4.28"	108.71 mm	2.00"	50.80 mm	1.00"	25.40 mm	0.78"	19.81 mm	—	—	1000	1.10	0.50
40 kHz	4.28"	108.71 mm	2.00"	50.80 mm	1.00"	25.40 mm	0.78"	19.81 mm	—	—	700	1.10	0.50
40 kHz Sealed	4.66"	118.36 mm	2.09"	53.09 mm	1.00"	25.40 mm	0.59"	14.99 mm	0.67"	17.02 mm	700	1.50	0.68
40 kHz Solid Mount	4.77"	121.16 mm	2.00"	50.80 mm	1.00"	25.40 mm	0.77"	19.56 mm	—	—	700	1.30	0.59
40 kHz Solid Mount	4.06"	103.12 mm	1.61"	40.89 mm	.87"	22.16 mm	1.02"	25.90 mm	—	—	600	.54	0.25
50 kHz	2.83"	71.88 mm	1.56"	39.62 mm	0.63"	16.00 mm	0.63"	16.00 mm	—	—	150	0.20	0.09
70 kHz	6.83"	173.48 mm	1.11"	28.19 mm	0.44"	11.18 mm	0.52"	13.21 mm	0.5"	12.70 mm	100	0.10	0.05

ADDITIONAL REQUIRED FEATURES AND ACCESSORIES

TOOLING

Actuators, generators, ultrasonic horns, and holding fixtures are not included as part of the base probe price and must be purchased separately.



ACTUATORS

PAS offers a wide range of actuators for integration in special equipment. Do not hesitate to contact your local representative to learn more about what is available. These actuators are designed to be interfaced directly with a PLC.